

Mil-Tec High Feed

- Steel
- Stainless
- Titanium



Feed rates of 150 to 300 IPM in Steels and Stainless Steels are possible. In Titanium, speeds up to 500 SFPM at 50 IPM.

Mil-Tec® **High Feed** Face Mills and End Mills bring a new level of milling performance to the metalworking industry. These High Feed cutters incorporate Mil-Tec's Positive Geometry and precision ground square inserts. High Feed cutters are freer cutting making them ideal for stainless steel, titanium and exotic alloys. This all makes the Mil-Tec **High Feed** ideal for smaller CNC's and 40 taper spindles.

Shank Style High Feed

Part#	EDP#	Dia	Shank	OAL	# Inserts	List Price
HFC-1.25-2-8	02150	1-1/4"	1"	4"	2	\$165.00
HFC-1.25-2-10	02151	1-1/4"	1-1/4"	4"	2	\$165.00
HFC-1.5-2-8	02152	1-1/2"	1"	4"	2	\$210.00
HFC-1.5-2-10	02153	1-1/2"	1-1/4"	4"	2	\$210.00
HFC-2-3-8	02154	2"	1"	4"	3	\$310.00
HFC-2-3-10	02155	2"	1-1/4"	4"	3	\$310.00

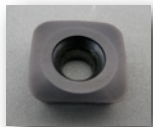


Shell Mill Style High Feed

Part#	EDP#	Dia	Bore	Keyway	Inserts	List Price
HFC-2.5-4 NS	02156	2-1/2"	1"	.380"	4	\$325.00
HFC-2.5-4 ML	02157	2-1/2"	1-1/4"	.500"	4	\$325.00
HFC-3-5 NS	02158	3"	1"	.380"	5	\$380.00
HFC-3-5 ML	02159	3"	1-1/4"	.500"	5	\$380.00
HFC-4-6 ML	02160	4"	1-1/2"	.625"	6	\$500.00

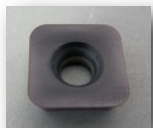


Recommended High Feed Inserts



Steel and Stainless Steel Inserts:

S-NP-125-52-AT / 72752AT: Square insert with .125 radius with Premium AT / AlTiN coating. Ideal for roughing in steel, Stainless Steel and Cast Iron. Four cutting edges.



Titanium, High Temperature and Exotic Alloys:

Z-PS-125-12-AT / 63712AT: Square insert with .125 radius with Premium AT / AlTiN coating. Ideal for roughing in Stainless, Titanium, Inconel and high temperature alloys. Two cutting edges.

